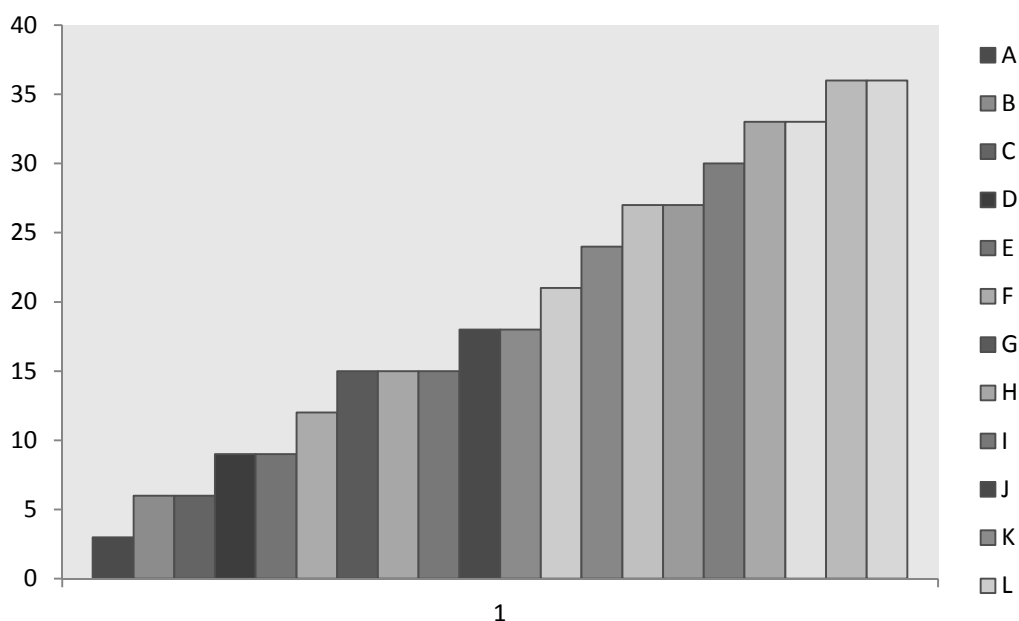


(e). Time schedule of activities giving milestone through bar diagram:



First Year	Months
A. Appointment of JRF and Field Assistants	3
B. Standardization of techniques and Purchase of equipments	6
C. Field survey for site identification	6
D. Collection and processing of aquatic macrophytes	9
E. Phytochemical screening and biochemical analysis of aquatic macrophytes	9
F. . A will defined business model proposed in this project will be implemented for the achievement of results. This model will only implement after the completion of the project.	12
Second Year	
G. Collection, processing and biochemical analysis of aquatic macrophytes continued	15
H. One 10 weeks feeding experiments will be conducted to test the efficacy of some identified macrophytes for the growth of common carp <i>C. carpio communis</i> species	15
I. Hemato-biochemical analysis of experimental will be carried out after the end of feeding experiment	15
J. One 10 weeks feeding experiments will be conducted to test the efficacy of some other identified macrophytes for the growth of common carp <i>C. carpio specularis</i> species	18
K. Proximate composition and Hemato-biochemical analysis of experimental will be carried out after the end of each experiment	18
L. Phytochemical screening of aquatic macrophytes will be continued	21
M. Two 10 weeks feeding experiments will be conducted to test the efficacy of some other identified macrophytes for the growth of common carp species	24
Third Year	
N. Proximate composition and Hemato-biochemical analysis of experimental fish will be carried out after the end of each experiment	27
O. Two 10 weeks feeding experiments will be conducted to test the efficacy of some other identified macrophytes for the growth of common carp species	27
P. Proximate composition and Hemato-biochemical analysis of experimental will be carried out	30

after the end of each experiment	
Q. Aquatic macrophytes based supplementary feed will be formulated based on above information and its efficacy will be tested in semi-intensive culture of both fish species at fingerlings stage	33
R. Above aquatic macrophytes based supplementary feed will be will be tested in intensive culture of both fish species at fingerlings stage	33
S. Preparation of final nutritional profile of aquatic macrophytes	36
T. Computation of data. Compilation and Submission of Project report.	36